



Rev Dr
Mervyn Duffy
BSc (hons), STL, STD

Student Feedback

“Clear presentations, always well prepared. Excellent graphics.”

“The theology of grace was hard but enjoyable”

T7337

2021 s1
Theology

Mode of Study

Campus
only

Level

NZQA Level 7
15 credits

Pre-requisite

One T7200 paper

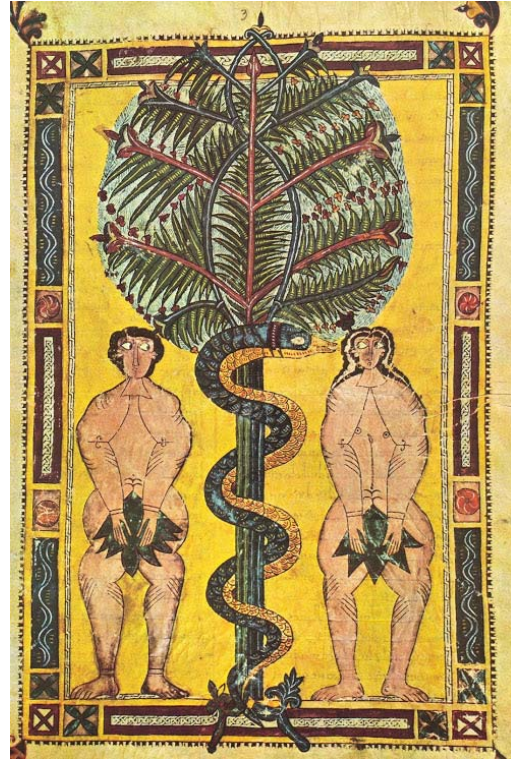
Duration

3 teaching hours
& 7 study hours
per week for 12
teaching weeks
in the semester
+ 2 weeks Study &
Exams

Assessment

Critical Review
Essay
Oral Exam

Christian Anthropology & Grace



Escorial Beatus,
10th Century illuminated manuscript

This course unit seeks to provide students with a theological understanding of the human person and the ability to relate Christian anthropology to the theology of grace. It enables students to begin to integrate their prior theological learning into a coherent framework based on a Christian vision of human persons and their orientation to the divine life.

